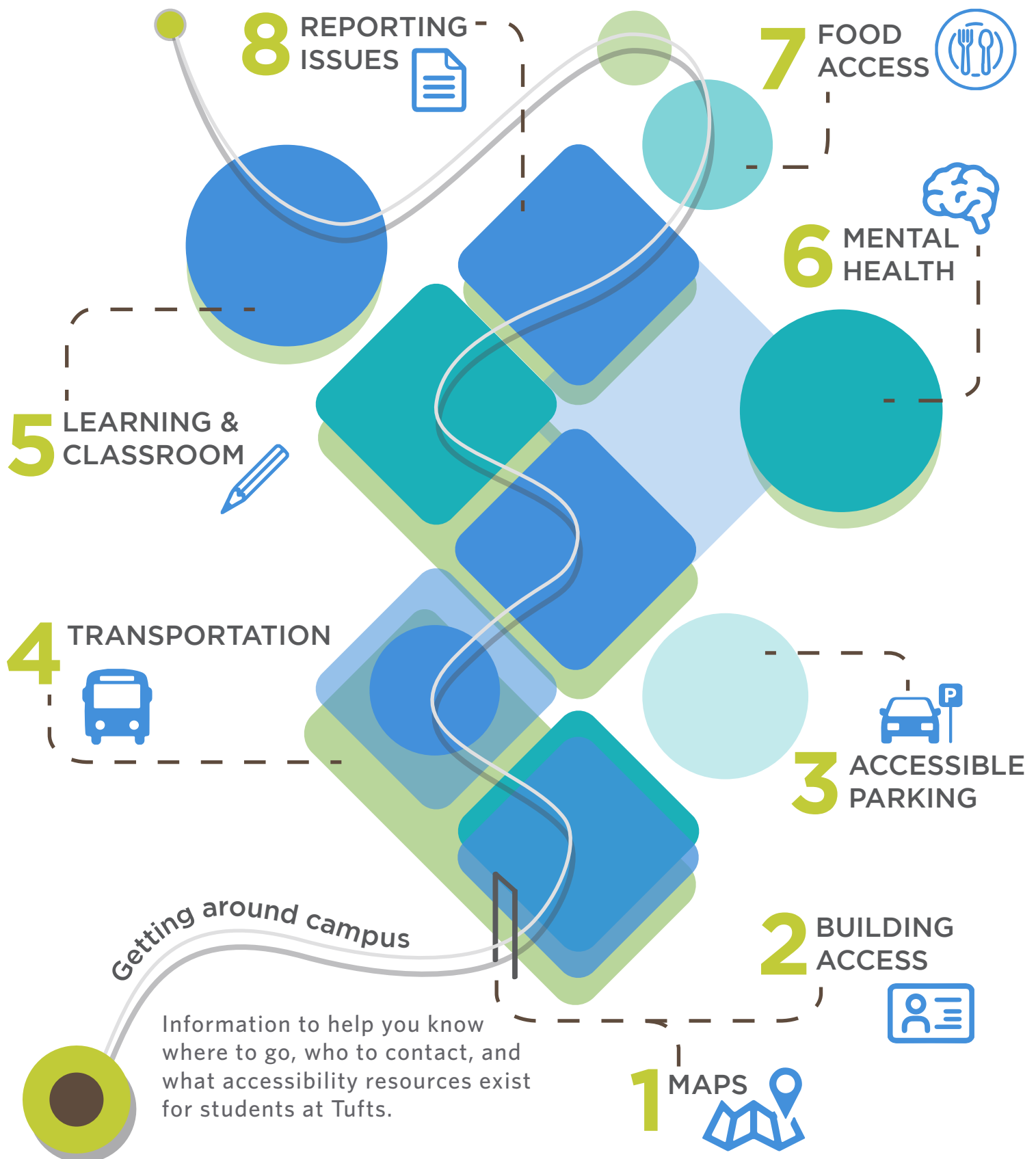


NAVIGATING TUFTS | MEDFORD CAMPUS

Resources for Accessibility & Accommodations

Tufts University Office of Equal Opportunity



NAVIGATING TUFTS | MEDFORD CAMPUS

Resources for Accessibility & Accommodations

Tufts University Office of Equal Opportunity



	1 MAPS What maps of campus are available to me? Where are accessible entrances, routes, and restrooms located?	Tufts Interactive Map Campus Directory (PDF) Accessibility Map (PDF) Gender Neutral Bathrooms (PDF) Campus Parking Map (PDF)
	2 BUILDING ACCESS How do I request an accommodation for getting into a building, due to a temporary or long-term disability?	Request an accommodation to: Receive help finding the most accessible campus entrances for you; gain access to a building entrance you need. Contact: Tufts OEO Johny.Laine@tufts.edu (617) 627-3298
	3 ACCESSIBLE PARKING Who do I contact for an Accessible Parking Pass? Where are Accessible Parking spaces located on campus?	Contact for Accessible Parking: Tufts OEO Johny.Laine@tufts.edu (617) 627-3298 Parking Permits Public & Environmental Safety: "Parking Permits"
	4 TRANSPORTATION What resources exist for getting around, to, and from the Medford Campus?	Public Safety & Transportation Resources: SafeRide Services: TapRide mobile app Tufts Shuttle Services & Routes: Davis Square, Boston Ave. & SMFA Public Transportation: nearby bus routes and T stop
	5 LEARNING & CLASSROOM How do I request an accommodation related to learning ability, classroom experience, or taking exams?	Request an academic accommodation: Student Accessibility Services (SAS) accessibility@tufts.edu (617) 627-4539
	6 MENTAL HEALTH Where can I find mental health & counseling resources on campus?	Contact for Mental Health Support: Counseling & Mental Health Services (617) 627-3360 after-hours emergencies: (617) 627-3030 Ears for Peers Anonymous peer hotline. (617) 627-3888
	7 FOOD ACCESS Are there resources to help me access food that is appropriate for my dietary needs, income, culture, and/or religious practice?	Tufts Dining Services has accommodations for various religious practices, dietary needs & allergies. Swipe It Forward is an anonymous meal swipe bank. Free Food at Tufts posts about free food on campus. Tufts Food Rescue Collaborative a student-run food rescue organization & posts about surplus food.
	8 REPORTING ISSUES How do I report a physical or online barrier, an incident, or ongoing case of ability discrimination that I have encountered?	Report a barrier: Physical or Online Barrier Form (OEO or SAS) Report discrimination: Ethicspoint (OEO) oeo@tufts.edu (617) 627-3298